

here comes the Hi-LO  
**telescoping**  
**custom**  
**camper**

up for living creates more headroom... more living space when you get there...

down for travel makes

the going easier, safer... especially at turnpike speeds



Who else but Hi-LO is so well qualified to build such a smooth-working camper? Fourteen years ago we introduced the first telescoping travel trailer... pioneered all the improvements in the lifting mechanism... and today thousands of Hi-LO Travel Homes are

proving its trouble-free superiority.

As a bonus, you and your family will enjoy Hi-LO's spacemanship... a combination of easy living conveniences and space-creating features so popular in Hi-LO Trailers. Many of these benefits are shown on the next two pages.

Look into the new Hi-LO  
**custom camper**  
and see if this isn't exactly  
what you want in a travel home

## up for living

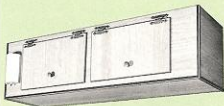
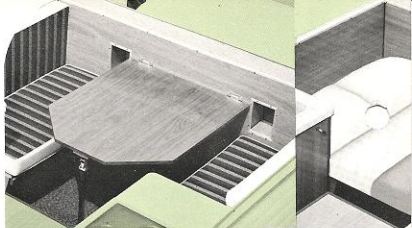


A flip of a switch raises your camper hydraulically . . . in seconds. Gives you a full 7-foot headroom for a spacious feeling not found in conventional truck-mounted campers. Two large windows on each side make it bright, light and airy . . . brings the outdoors inside. And for truly great living convenience, take a bird's-eye view of the Hi-LO as shown at right.

## down for travel



On the highway the overall height of your Hi-LO Camper is only inches higher than your cab, lower than the average for upright models. The improved safety factor is considerable with far less swerve and sway in high winds. Lower center of gravity improves roadability and cornering . . . especially at higher speeds. And you'll enjoy a significant savings in gas mileage. Hi-LO engineering offers you other big on-the-highway benefits. Weight distribution is improved . . . moved forward. Water tank, propane tanks and lifting mechanism are at the extreme front. This is easier on your truck . . . means less chance for fish-tailing.



### Plenty of kitchen storage space including two overhead cabinets

Your Hi-LO Camper galley gives you plenty of cupboard space for dishes, utensils and food. Not shown in the large photograph are two overhead cabinets measuring 43" wide, 12½" high and 12" deep. Cabinets have non-sticking, non-warping core doors with a beautiful laminated finish.

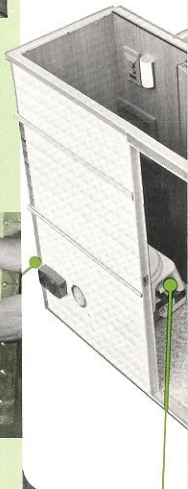


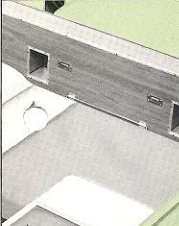
### Locked compartment houses raising and lowering mechanism switch

A safety precaution to keep children's hands away. Also houses your electrical shoreline for connecting your camper to 110-volt outlets where available.

### Toilet compartment with folding door for complete privacy

Compartment is adequate in size (23" x 33") and beautifully finished in laminated pecan. Floor covering is heavy-duty vinyl. Includes large holding tank. Choice of toilet models. (see specifications)



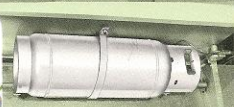
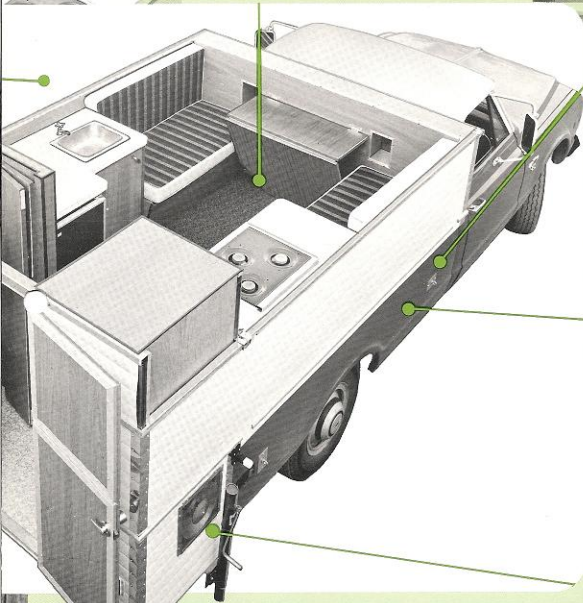
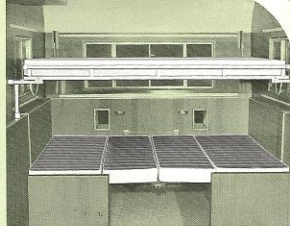


**Living area quickly converts to dining for four and king-size sleeping for two**

With table in its drop-leaf position as shown in the bird's-eye view, you enjoy full living room convenience. When raised, as shown at the left, you have comfortable dining facilities. At nighttime, the dinette is quickly and easily changed into a full-sized double bed. Area is well-lighted for reading, card playing and other activities.

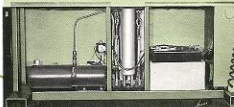
**Exclusive swingaway double bed converts your custom camper to sleep four comfortably**

This full-sized bed is up and out of the way during the day . . . swings down in position at night. Operation is smooth and easy. Sturdy tubular steel frame construction. Deep foam mattress.



**Propane tanks carried forward under skirt**

Two tanks, one on each side, are out of sight and in the safest possible position while traveling. Swing-down bracket makes tank changing fast and easy. Location also improves overall weight distribution.



**Exclusive Hi-LO lift mechanism proven trouble-free on thousands of trailers**

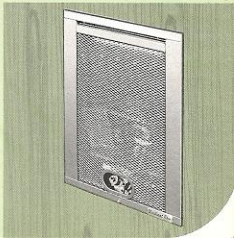
Has its own 12-volt battery that is automatically charged by your truck generator. Hydraulic pump and cylinder have capacities far in excess of actual lifting requirements. Raises upper section 23" smoothly in 18 seconds. Includes many protection features.

**Automatic gas wall heater**

Thermostatic controlled 10,000 BTU capacity keeps your Hi-LO Camper comfortable even in winter months. All features for 100% safe operation.

**FOR THE WOMAN  
IN THE FAMILY —  
FEATURES THAT  
MAKE YOUR HI-LO  
AN EASY-LIVING  
TRAVEL HOME**

- Three burner range top.
- Combination 12/110 volt refrigerator.
- Stainless steel sink with 20-gallon water supply and DC powered pressure system.
- Walls and cabinets in beautiful, warm pecan finish — laminated for wipe clean care.
- Floors: Living and galley area carpeted. Entrance area in heavy-duty vinyl.
- Ceilings are beautiful textured aluminum. Wipe clean with a damp cloth.
- Counter tops are gold-flecked white high-pressure laminate.
- Lighting: Combination 12/110 volt system with attractive fixtures, well located in kitchen and living areas for all indoor activities.



## FACTS FOR THE MAN OF THE FAMILY

*Features that make the Hi-LO your best possible investment*

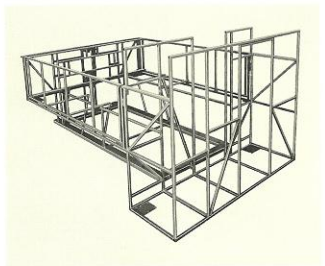
**The best frame in the industry** is all tubular steel . . . jig built for precision . . . all welded for strength . . . reinforced at all stress points. Upper section (not shown) features this same unitized construction.

**Insulated** for living room comfort in the coldest weather. Both walls and ceilings feature a 5-layer sandwich construction which includes a thick fiber-glass layer.

**Tight gasket seals** between upper and lower sections in both the raised and lowered positions. Seals out moisture, dust and drafts.

**Permanently installed jacks** (optional) swing down to remove unit from truck bed.

**Other deluxe features:** Aluminum screens in all windows, larger, safer tail-light and back-up light assemblies, rear-door light, easy-care aluminum siding, communicating windows between cab and camper in lowered position.



## STANDARD AND OPTIONAL FEATURES OF THE HI-LO CUSTOM CAMPER

- Power lift assembly complete with battery and remote control switch.
- Combination 12/110 volt refrigerator.
- Three-burner range top.
- Single sink.
- 20-gallon water tank.
- 12-volt pressure pump.
- Two ceiling cabinets.
- Living area carpet.
- Electric access door with 20' power cord.
- Back-up lights.
- Awning rail.
- Two 20# gas bottles.
- Snap-on drapes.
- Entrance step.
- Roof vent.

## OPTIONAL FEATURES

- Swing-away double bed
- 10,000 BTU wall heater
- Porta Potti
- Monomatic Toilet-installed
- Awning
- Automatic throwover regulator
- 1-2-See Convertible Lamp
- Plastic bubble for vent
- Window trim
- 110 volt bullet lamp
- Sewer hose (3" x 10')
- Oven/range unit
- Camper jacks (set of 4)
- Camper tie-downs (set)
- Cab-to-camper intercom

## BASIC SPECIFICATIONS:

Fits all ¾-ton fleetside pick-up trucks. Weight—2300 lbs. Travel height down—approximately 15" to 18" above cab. Telescoping up 23" in 18 seconds for a full 7'-0" head room in kitchen area and 6'-8" in living area. Overall exterior length—17'-0". Overall exterior width—84". For other specifications, see features on pages 2, 3, and 4.



The sure and trouble-free performance of Hi-LO's lifting mechanism is one of the quality benefits you find in the new Custom Camper. The Snyder Trailer Company pioneered the concept of telescoping travel homes. Today thousands of Hi-LO Trailers are in use throughout the United States and Canada. Shown is the 20-ft. Bon Voyage "200". Also available are the 18-ft. Traveler "180" and the 16-ft. Voyager "150".

**HI-LO TRAILER WARRANTY**—We warrant all Snyder Trailer Company's Hi-LO telescoping custom campers for 90 days from date of purchase against defective parts and workmanship. We will replace, free of charge, any defective part, i.e., the factory. The Snyder Trailer Company reserves the right to make changes or improvements upon its product without imposing any obligation upon itself to install the same upon its products that have been previously manufactured. All warranty claims, work, shipments must be handled through an authorized Hi-LO dealer.

The appliances in a Hi-LO Trailer carry a separate warranty by the manufacturer. For appliance service, contact your local appliance dealer or manufacturer's service center.

**NOTE:** Any Snyder Trailer Company product that is used for rental, or has been altered in any way, or driven in its upright position, will not be covered by this warranty, unless specifically authorized by the factory in writing.

**WARRANTY COVERAGE**—The factory assumes no responsibility until the warranty card, properly completed, has been received by the factory.



THE SNYDER TRAILER COMPANY • 100 ELM STREET • BUTLER, OHIO 44822